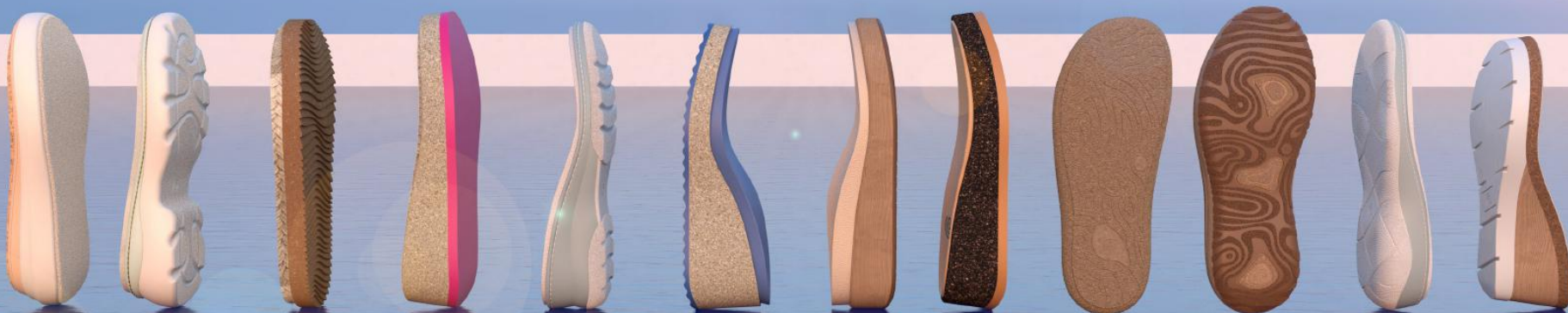


CATALOGUE

NEW COLLECTION



SPRING
SUMMER
2025


Analco[®]
THE SHOE COMPONENTS BRAND

Introducing Spring-Summer 2025:

Unleash your Creativity!

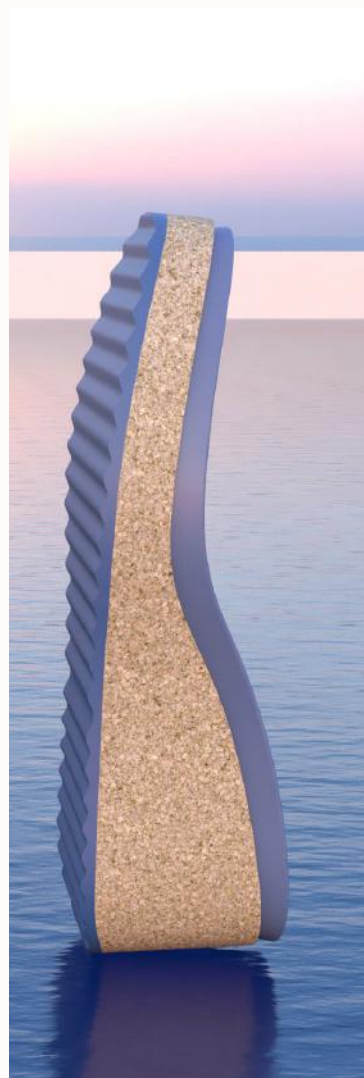
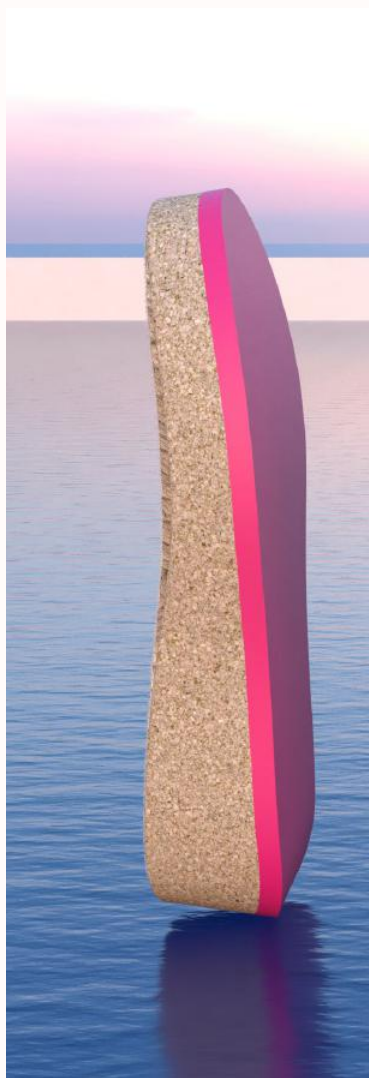
This year, at Analco, we invite you to explore a universe of creativity through our new catalogue of soles, insoles and sheets for the Spring-Summer 2025 season.

Each element of this collection reflects the positivity and radiant tones of spring and summer. We have presented them in shoes and sandals with captivating prints and avant-garde cuts that help to convey the essence of each component developed.

At Analco, we believe in fashion as a form of personal expression, and that's why we offer you a wide range of models that will allow you to create, mix and match textures and colours. It's the perfect time to free your imagination, explore new horizons and embrace the freshness of the season.

With a lot of emotion,
The Analco team





Índex



01

14145 + 6512 / 41006

PAGE 05-06



02

14170 + 6512 / 41006

PAGE 07-08



03

70780 + 6661 / 6608 / 65001 / 6671

PAGE 09-14



04

14206 + 6586 / 41007

PAGE 15-16



05

14066 + 6415 / 31774 / 65001

PAGE 17-18



06

6658 + 6512 / 65002 / 41006

PAGE 19-22



07

70930

PAGE 23-26



08

70929

PAGE 27-28



09

6663 + 6637

PAGE 29-30



10

14067 + 6587

PAGE 31-32



11

13294 + 30116

PAGE 33-34







14145 + 6512 / 41006

PU SOLE: 14145
SIZE RANGE: 35/42



PU FOOTBED: 6512
SIZE RANGE 35/42



EVA INSOLE: 41006
SIZE: 35/42







PU SOLE: 14170
SIZE RANGE 35/42



PU FOOTBED: 6512
SIZE RANGE 35/42



The **PU sole 14170** with the **PU 6512 or EVA 41006 insole** combines the highest quality materials to create a **light and comfortable sandal** with either of the two removable insole options. These elements have the perfect balance of a sporty touch, a subtle heel and a lightweight design to make every step a journey to maximum comfort.

EVA INSOLE: 41006
SIZE RANGE: 35/42



Join the **urban outdoor style** with our reinvented classic: **the versatile TR 70780 sole!** A creative fusion of colours and natural fibres, accompanied by the authenticity of the **65001 natural jute footbed or the 6608, 6661 and 6415 PU insoles** for a touch of lift. It can also be complemented with the **rubber-cork footbed 31774.**

JUTE FOOTBED: 65001

SIZES: 35/42



PU INSOLES: 6661

SIZE RANGE: 37





70780 + 65001 / 6661



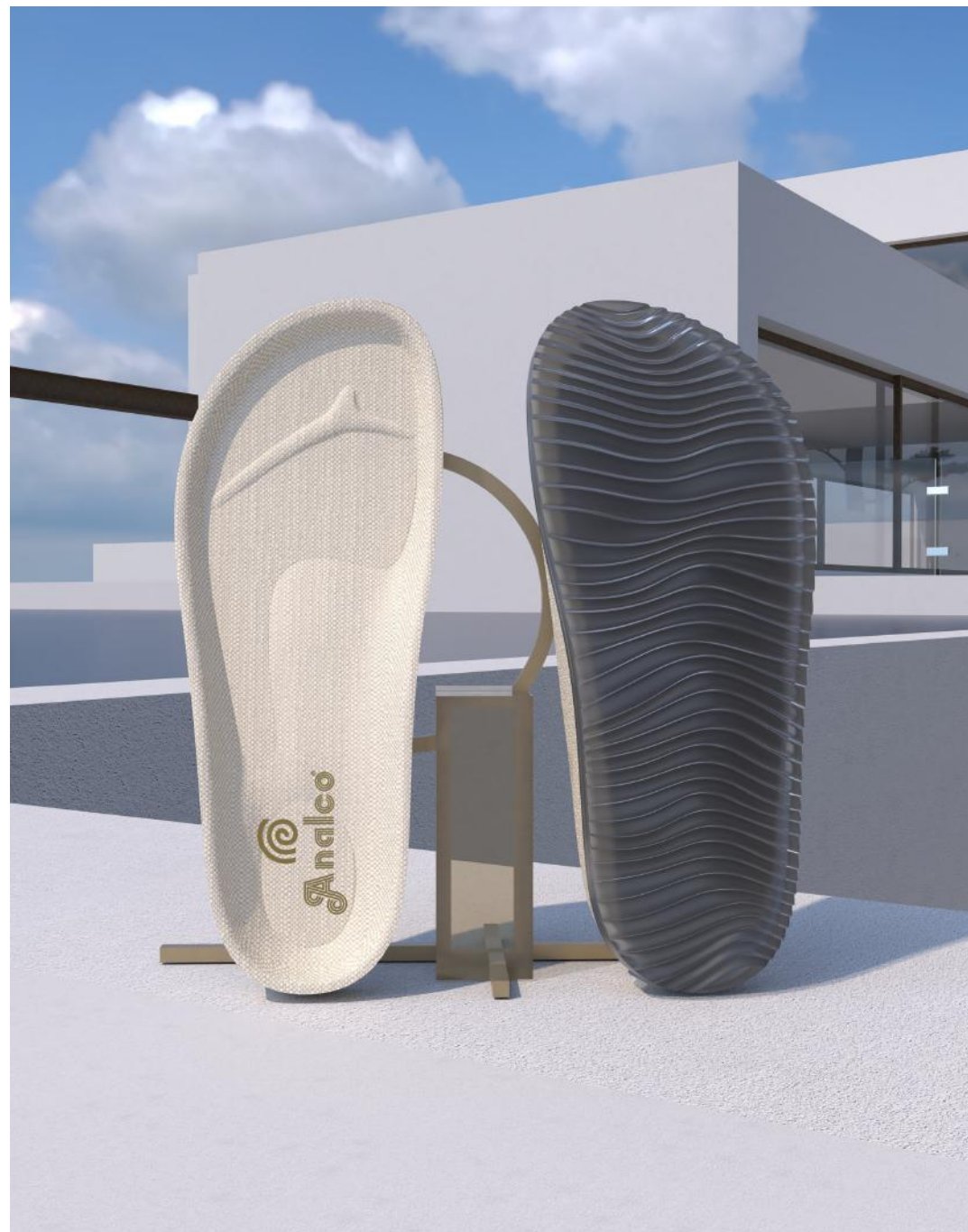
TR SOLE: 70780
SIZE RANGE: 35/42



PU INSOLES: 6608
TALLAS: 35/42

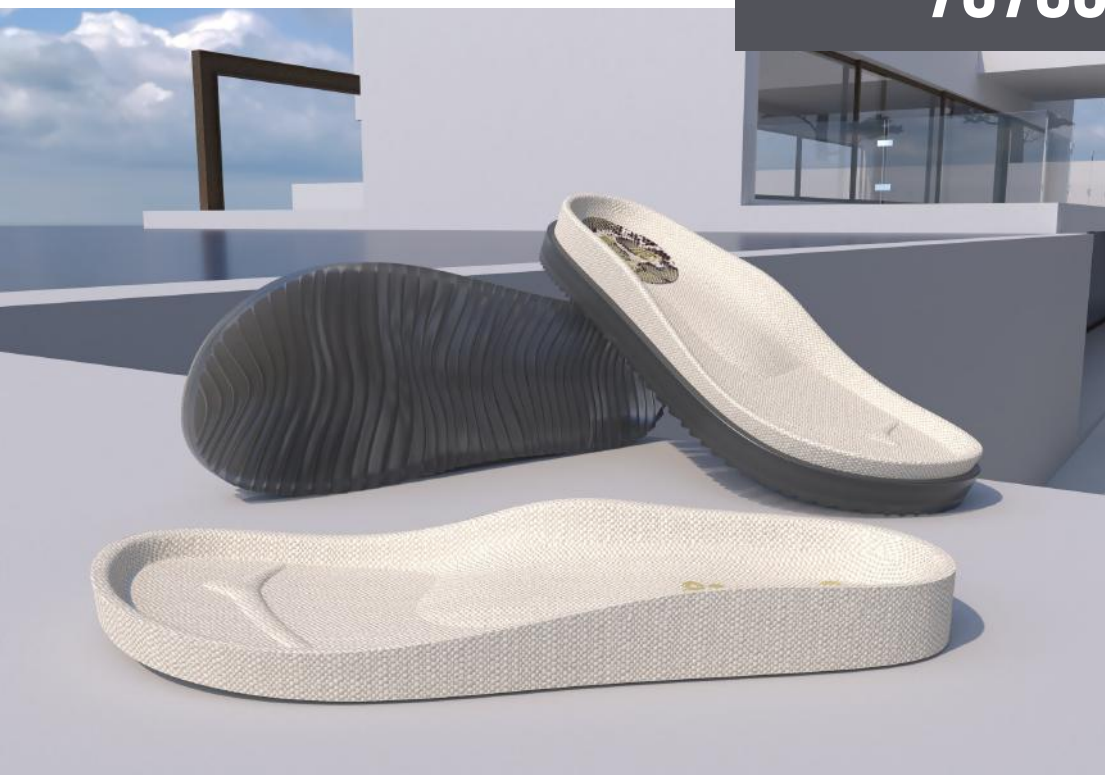


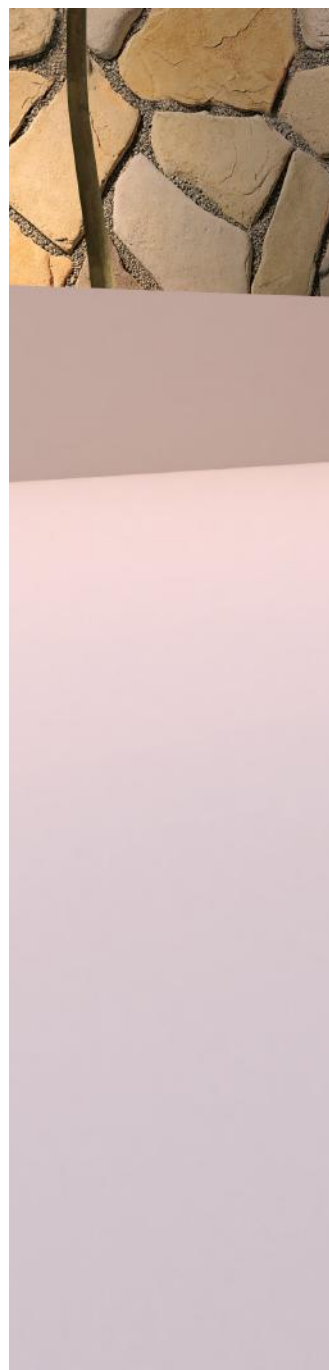
These components make it possible to create sandals with the perfect dose of **comfort, freshness and originality**, taking you around town with style and personality.





70780 + 6608







Introducing the innovative 6671 polyurethane plant. A unique high-rise option for those looking to elevate their style and comfort at the same time.

PU SOLE: 6671
SIZE: 37



70780+6671

The **PU 14206 sole** together with the **PU 6586** or **EVA 41007 insole**, allows the design of elegant sandals, thanks to the diversity of colours that can be applied, light and comfortable thanks to either of the two possibilities of removable insoles.

EVA INSOLE: 41007

SIZE: 37



PU FOOTBED: 6586

SIZE RANGE: 35/42



PU SOLE: 14206

SIZE: 37





14206 + 6586 / 41007

NEW





14066 + 65001 / 31774 / 6415

PU SOLE: 14066
SIZE RANGE: 36/42



JUTE FOOTBED: 65001
SIZES: 35/42



RUBBER-CORK FOOTBED: 31774
SIZE RANGE: 35/42



PU FOOTBED: 6415
SIZE RANGE: 35/42





The **14066 PU sole** offers a wide range of colours, ideal for a lively and youthful style during the warmer months. Combine it with **PU insole 6415**, **rubber-cork footbed 31774** or **jute footbed 65001** to create a stylish sandal that captures the energy of the spring-summer season.



This sandal is composed by the **model 6658**, a **PU-cork midsole** that can be presented with a **5 or 7,5 mm thick EVA outsole** or a **3 mm rubber cutting** from our catalogue, providing an exceptional traction and a soft walking sensation. It can also be combined with any of the insoles that fit this model: **PU 6512** or **EVA 41006**.



These elements will create a trend-setting sandal!



6658 + 6512 / 41006



NEW

PU-CORK MIDSOLE: 6658
SIZE: 37



PU FOOTBED: 6512
SIZE RANGE: 35/42

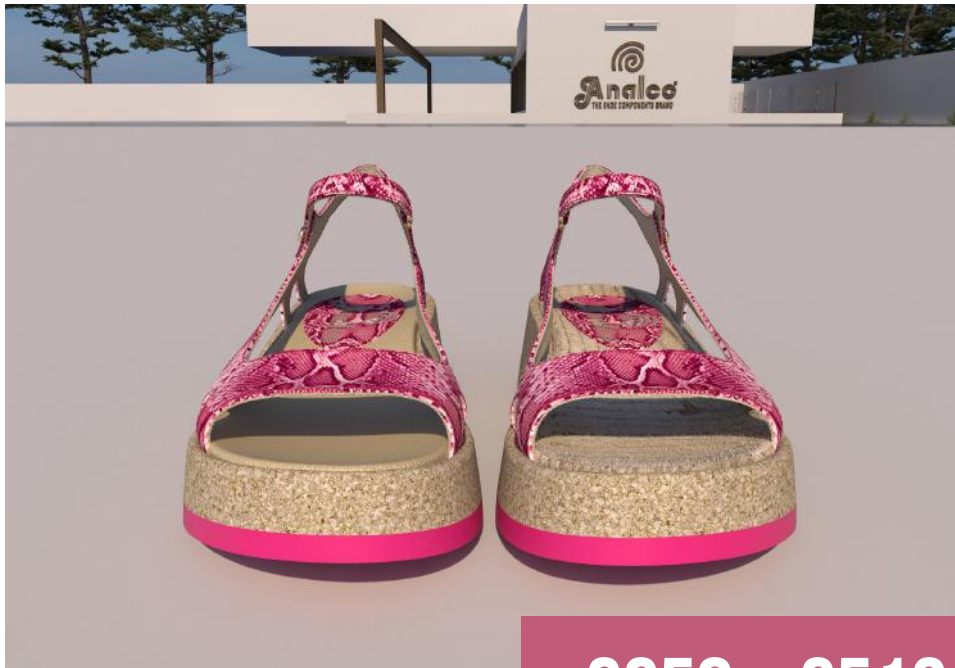


EVA INSOLE: 41006
SIZE: 35/42

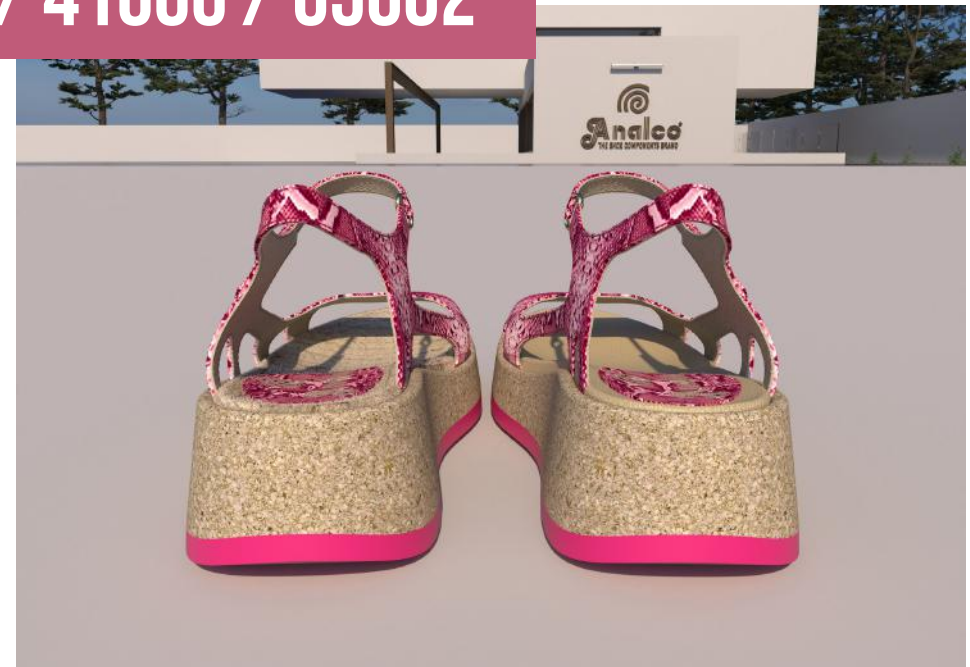


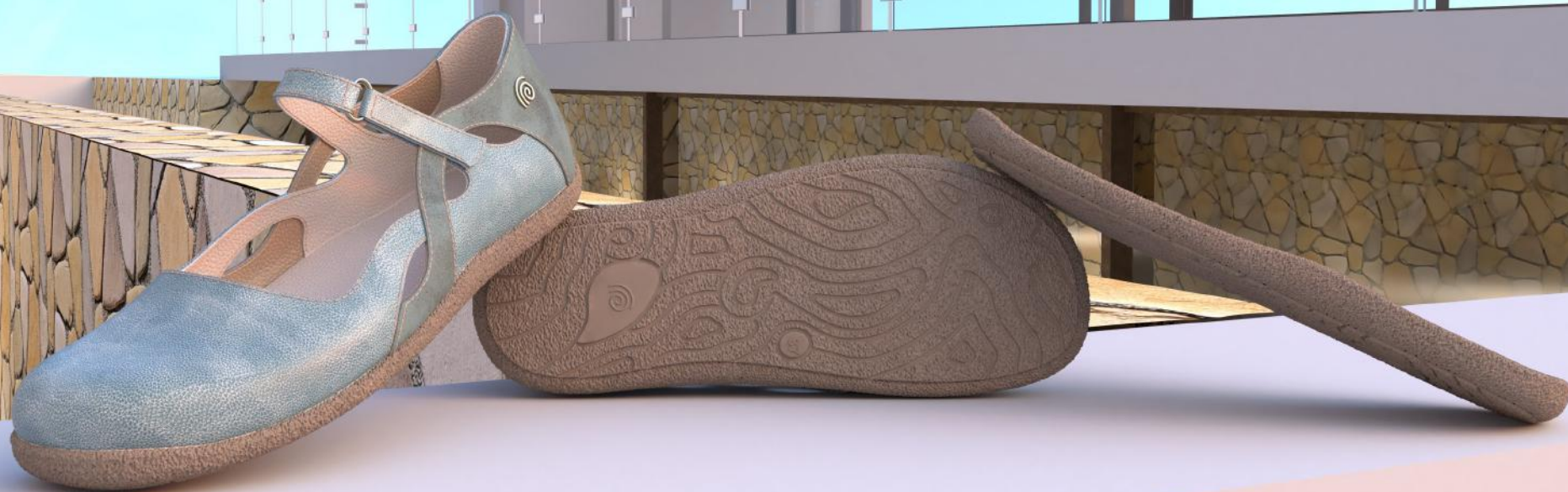
JUTE FOOTBED: 65002
SIZE: 38





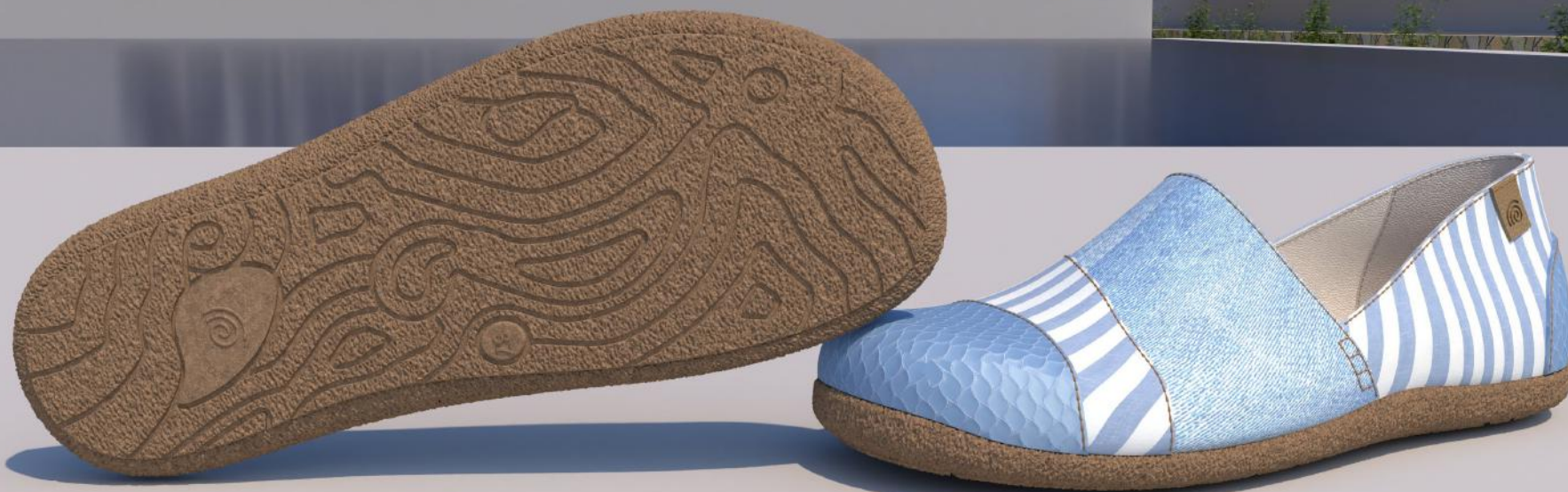
6658 + 6512 / 41006 / 65002

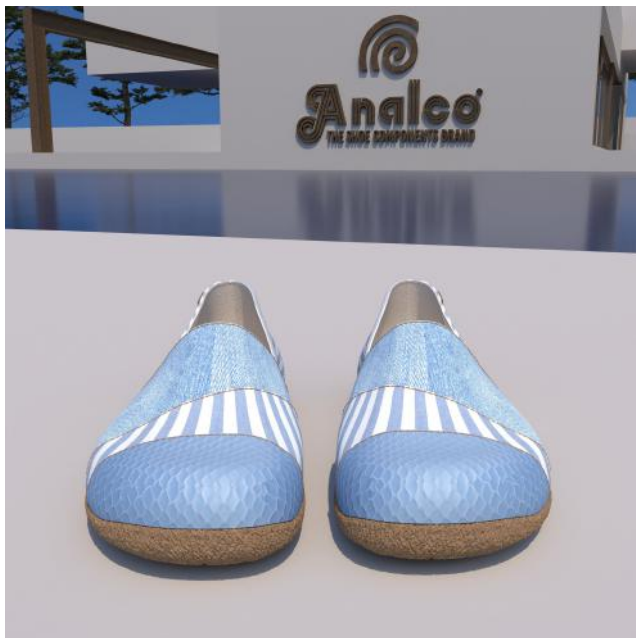




Step into the **latest trend in responsible fashion** with our **TR 70930 sole**, designed in the modern cut of interlocking moccasins. Beyond guaranteeing lightness and flexibility, these soles represent an expression of innovation and environmental responsibility by incorporating natural fibres in their composition.







TR SOLE: 70930
SIZE RANGE: 36/42





TR SOLE: 70929
SIZE RANGE: 35/42



Discover the **70929 sole, made of TR material**. Its special tread design not only improves grip, but also allows for two-tone options, offering multiple combinations. You can even choose to further personalise your style by selecting a crystal effect for a distinctive translucent touch that makes your shoes stand out!





6663 + 6637

NEW

The **cork PU wedge 6663**, the star and novelty of this season, stands out for its stylish design enhanced by a **5 mm EVA outsole**, bringing style and elegance.

The **6637 PU sole** is the secret to guaranteeing exceptional ergonomic support, reaffirming the harmony between fashion and well-being.

CORK PU WEDGE: 6663

SIZE: 37



PU SOLE: 6637

SIZE RANGE: 35/42



Model 14067 together with the **removable footbed 6587**, both made of **polyurethane**, are the perfect symphony of comfort and style. We also have the option of the **cork insole ref. 31181**, ideal for those who are looking for natural materials without sacrificing fashion.

PU FOOTBED: 6587

SIZE RANGE: 35/42



PU SOLE: 14067

SIZE RANGE: 35/42





PU SOLE : 13294
SIZE RANGE: 35/42



RUBBER-CORK FOOTBED : 30116
SIZE RANGE: 35/42



The true essence of summer arrives with **model 13294**. Not only will this polyurethane wedge elevate you to new heights, but it also pairs perfectly with the **30116 rubber-cork footbed** for an experience of summer footwear, authenticity and freshness.





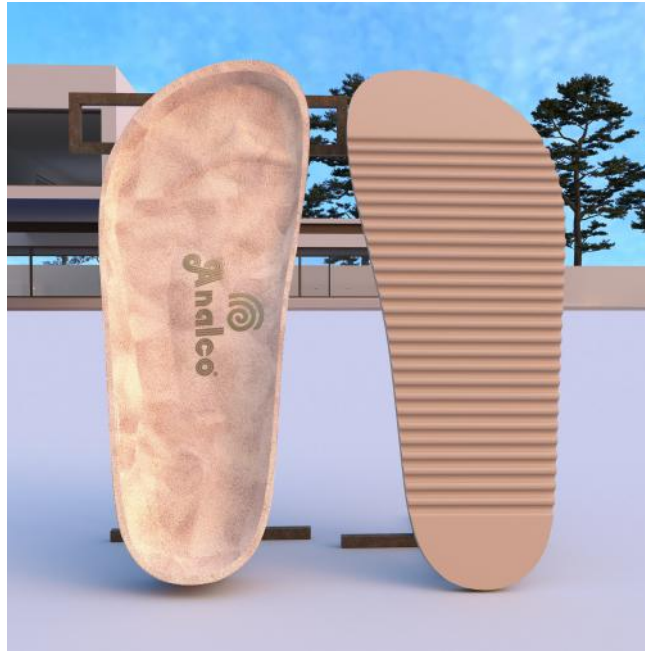
13294 + 30116





RUBBER-CORK FOOTBED: 31864

SIZES: 35/41



We present you the 31864 model! A fashion-forward choice for combining the unparalleled comfort of rubber-cork material with a high-volume sole design enhanced with an EVA outsole. Its distinctive anatomy ensures a precise fit to the foot, providing optimal support and exceptional comfort, with an EVA padding for a lightweight and comfortable experience.



DESIGN

Our team of designers works tirelessly to create products that blend style and functionality, adapting to the latest fashion trends and satisfying the needs of our customers.



SUSTAINABILITY

From choosing eco-friendly materials to employing environmentally respectful manufacturing practices, we strive to reduce our environmental impact and contribute to a more sustainable future.



QUALITY

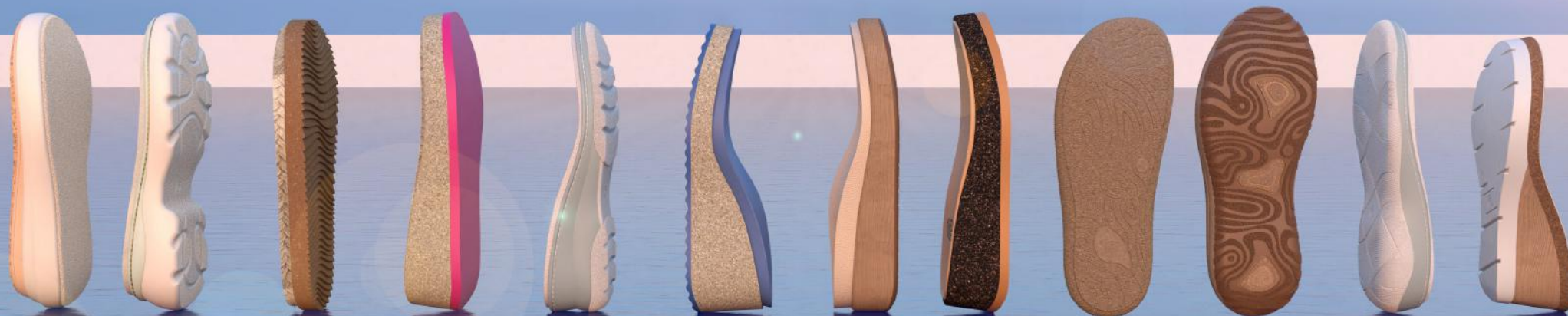
We are committed to providing products of the highest quality, backed by decades of experience and the implementation of rigorous quality control standards. Every sole and insole we produce reflects our commitment to excellence.



TRADITION

With a history spanning over 50 years, Analco has cultivated a rich tradition in the manufacturing of footwear components. Throughout generations, we have perfected our techniques, preserving craftsmanship and traditional knowledge in every product we create.





PHONE

+34 966 66 12 12

EMAIL

analco@analco.com

WEB PAGE

www.analco.com

SOCIAL NETWORKS

Instagram y LinkedIn

COMMERCIAL OFFICE

Pol. Ind. Torrellano
c/Germán Bernácer, 11
03203, Elche (Alicante)

PRODUCTION CENTER

Avinguda de Crevillente, km 3,
03293 Elche (Alicante)

Pol.Ind. San Juan
c/Sevilla, 15 03158 Catral
c/Barcelona, 03158 Catral