

**THROUGH
THE WINDOW**



Catalogue Spring Summer

2026



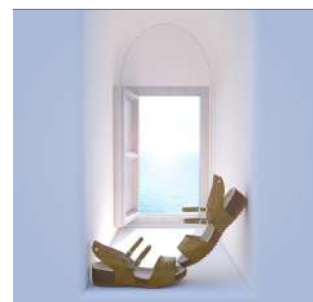
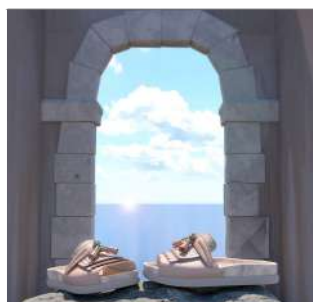
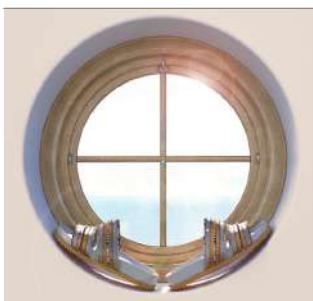
THROUGH THE WINDOW

Each **sole**, **insole** and **sheet** in this collection is an **open window to creativity**, waiting to be transformed into a design that **makes a difference**. Each piece is a **starting point** for creating something that **challenges the established norms**.

Spring-summer 2026 refuses to be limited by pre-established paths: it's time to **open new windows to design**, to **reinvent**, to **blend the classics with the daring** and to turn **ideas into creations** that speaks for themselves.

At Analco, we don't just manufacture components; we create possibilities. Are you ready to take the next step?





SS26

INDEX

1

6679+6512/41006
Pp. 5-6



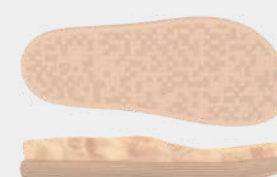
4

14145+6512/41006
Pp. 13-14



7

**80011+6608/
31774**
Pp. 19-20



2

6682+20200/6692
Pp. 7-8



5

14248
Pp. 15-16



8

**14170+6512/
41006**
Pp. 21-22



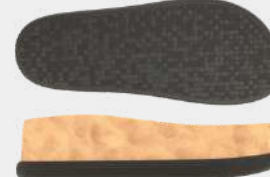
3

6683
Pp. 9-12



6

80011+6671/6415
Pp. 17-18



9

**14206+6586/
41007**
Pp. 23-24



10

14255
Pp. 25-26



13

70780+6684
Pp. 31-32



16

14259
Pp. 37-38



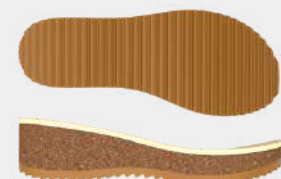
11

14256
Pp. 27-28



14

6691
Pp. 33-34



12

14257
Pp. 29-30



15

14241
Pp. 35-36





6679

PU-CORK SOLE

The **model 6679+6512/41006** provides designers with a **versatile solution** that combines **technology** and **essence**. The **PU cork sole** with the **thick EVA outsole** offers a **lightness** and **optimal shock absorption**, while its **anatomical design** adapts precisely to the foot, ensuring **all-day comfort**.



PU-CORK SOLE: 6679	SIZE RANGE: 35/42
PU FOOTBED: 6512	SIZE RANGE: 35/42
EVA INSOLE: 41006	SIZE RANGE: 35/42



Additionally, It allows for **endless customization** in the **linings**, offering **endless possibilities** to match different **aesthetics**.



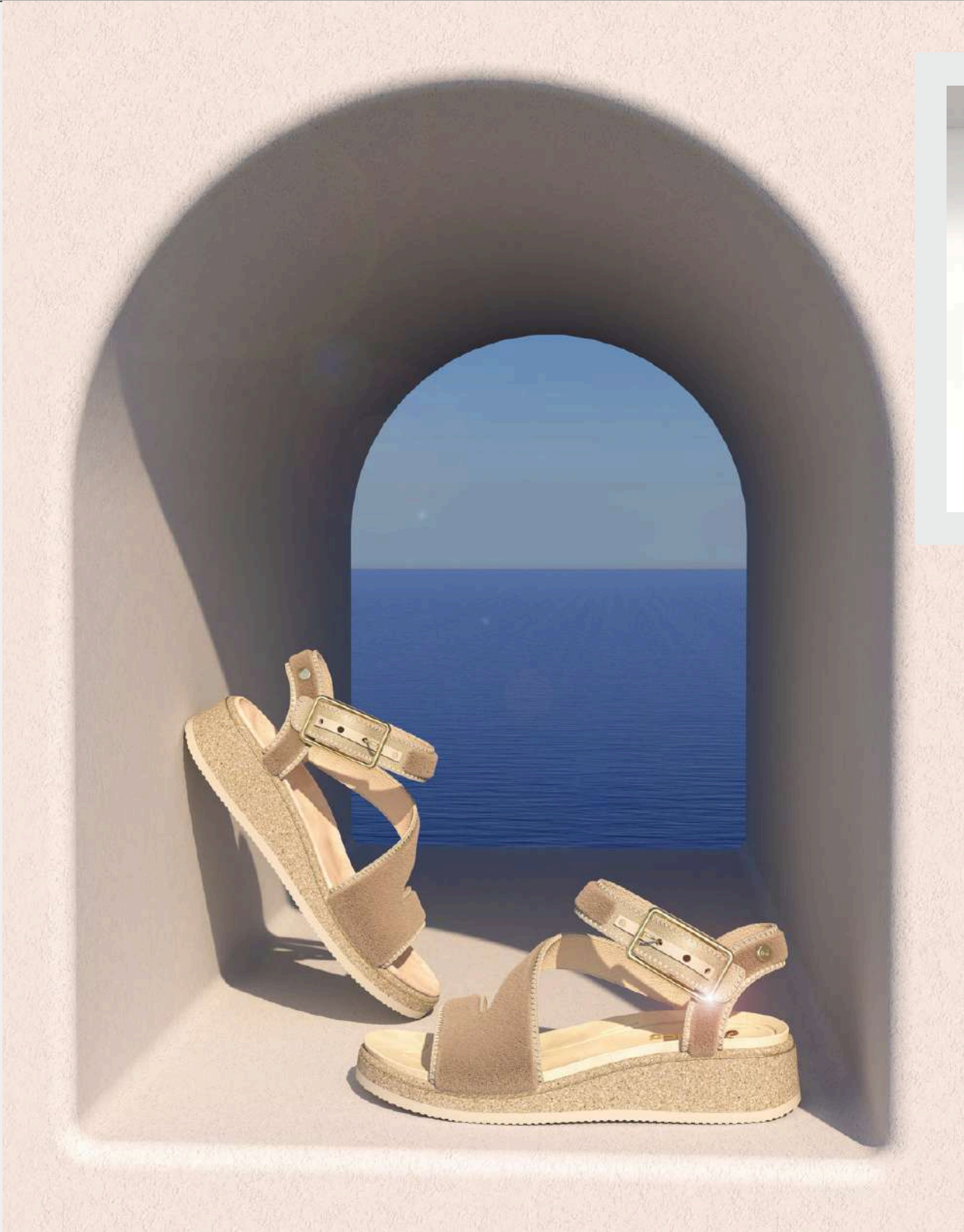
6682

PU-CORK SOLE

The **6682 sole model**, with its **PU cork structure** and **6 mm thick EVA outsole**, combined with the **20200 lightweight cork insole** or the **6692 PU footbed**, redefines the concept of **lightness** and **durability** in **comfort sandals**.

This **sole** is a proposal that expands **creative possibilities** for the **spring-summer 2026** season.





PU-CORK SOLE: 6682	SIZE: 37
LIGHTWEIGHT CORK INSOLE: 20200	SIZE: 37
PU FOOTBED: 6692	SIZE: 37



6683

PU FOOTBED





PU FOOTBED MEN: 6683 SIZE RANGE: 40/46



More and more **men and women** are seeking **light and elegant alternatives** for the **summer**, moving away from the **classic sneaker**. This **anatomical insole model** provides **extraordinary comfort** to any **sandal** thanks to the **soft PU polyether material** used in its manufacture.



6683

PU FOOTBED





It is available in different **synthetic linings** such as **microsuede**, **stretch** or **sued stretch**, as well as **cow split leather**, allowing it to be adapted to different **styles** and **preferences** of sandals.



PU FOOTBED WOMEN: 6683
SIZE: 37

14145

PU SOLE

PU SOLE: 14145 SIZE RANGE: 35/42

PU FOOTBED: 6512 SIZE RANGE: 35/42

EVA INSOLE: 41006 SIZE RANGE: 35/42

These **soles** and **insoles** made of **polyurethane** or **EVA** are born from our **passion for comfort**. They are the result of **years improving** the formula for **well-being**.



Their **ergonomic design** embrace your feet with a **softness** that feels **taylor-made**.



14248 PU SOLE

PU SOLE: 14248

SIZE RANGE: 35/41

Made from **ultra-light polyether polyurethane**, the **14248 sole** is a **breakthrough in footwear**. Designed to move at the pace of those who **never stop**, it is the **perfect ally** for those days that **demand everything from you**. It combines **unparalleled lightness** with **superior resistance**, providing a **firm step** without adding **unnecessary weight**.





80011 EVA SOLE

The **80011** model establish a **new standard** in **ultra-light EVA soles** for **sandals**. Its design integrates perfectly with a **wide variety of footbeds**: the **6671** adds **height**, the **6415** and **6608** offer **extra comfort**, and the **31774** **rubber cork model**, provides a **natural touch** in tune with **sustainable trends**.





EVA SOLE: 80011

SIZE: 37

PU FOOTBED: 6671

SIZE RANGE: 35/42



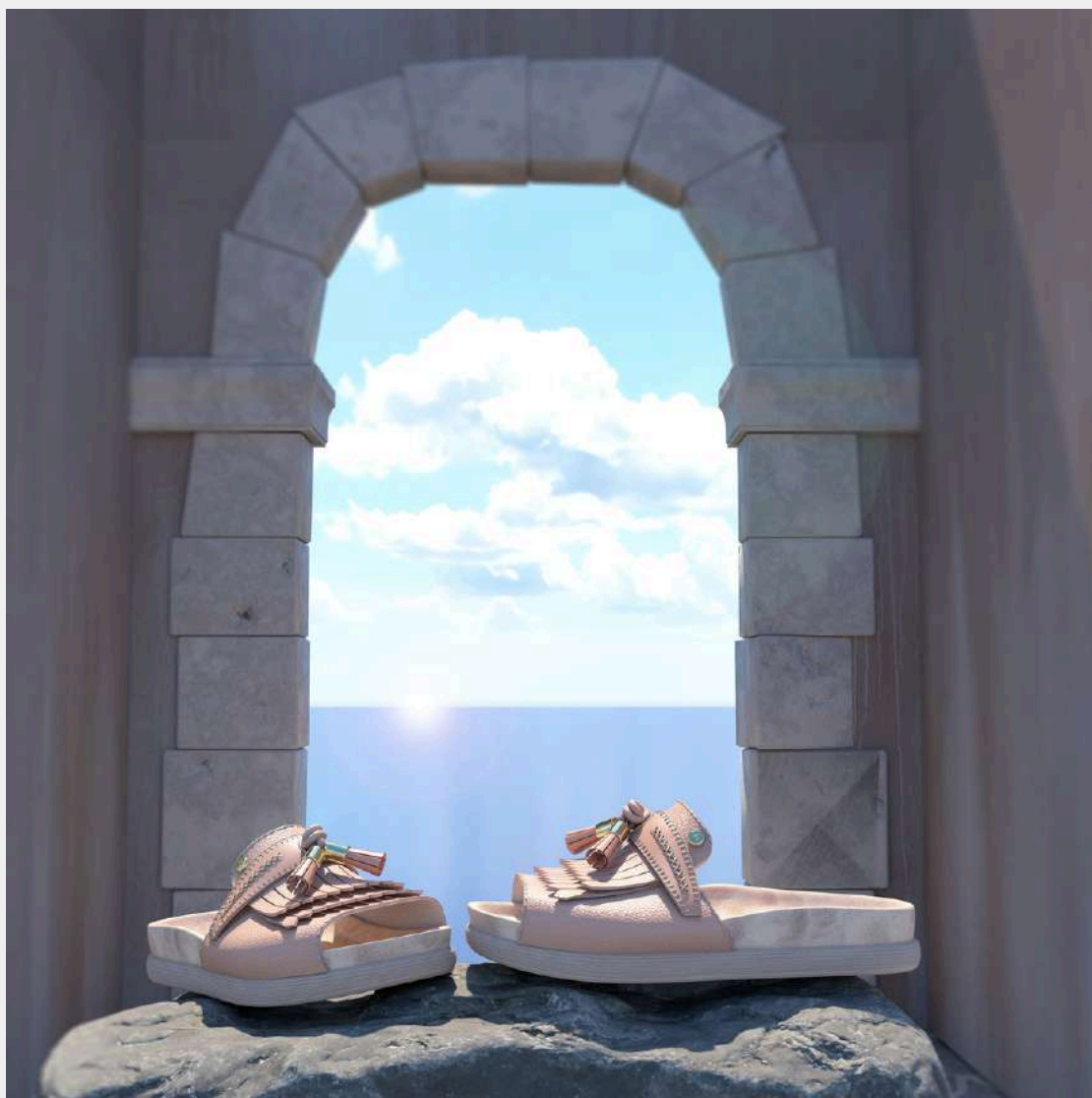
PU FOOTBED: 6415

SIZE RANGE: 35/42



80011

EVA SOLE





RUBBER-CORK FOOTBED: 31774
SIZE RANGE: 35/42



EVA SOLE: 80011

SIZE: 37

PU INSOLE: 6608

SIZE RANGE: 35/42





14170

PU SOLE

PU SOLE: 14170	SIZE RANGE: 35/42
PU FOOTBED: 6512	SIZE RANGE: 35/42
EVA INSOLE: 41006	SIZE RANGE: 35/42

The **14170+6512/41106 model** not only meets **comfort standards** but exceeds them. Its PU sole, with rounded shapes, promotes a **smooth step** and a **more natural transition** with each step.



Combined with **interchangeable insoles** in **PU 6512** or **EVA 41006**, it ensures a **precise fit** and a **sense of well-being** that adapts to **any pace**.



14206

PU SOLE

PU SOLE: 14206	SIZE RANGE: 35/42
PU FOOTBED: 6586	SIZE RANGE: 35/42
EVA INSOLE: 41007	SIZE RANGE: 35/42





Inspired by the **harmony of nature** and designed for **urban dinamism**, the **PU 14206 sole** stands out for its **wood effect**, combining **aesthetics** and **functionality**. Along with the **PU 6586 insole** or the **EVA 41007 insole**, its offer a **unique comfort experience**.



14255

PU SOLE

PU SOLE: 14255

SIZE: 37

The **14255 model** is **tribute to tradition**, but with a **fresh twist**. We have revived a **classic**, featuring a **PU structure** and a **heel** that has proven its **durability** over the year.

The **upper design** stays **loyal to its origins**, providing the same **comfort** and **stability** it always has, but now with a **refreshed profile** that aligns with **current trends**. A **classic** that we have given a **second live**.





14256
PU SOLE



PU SOLE: 14256

SIZE: 37

The **14256 model** features an **anatomical sole** designed for **sporty sandals**, offering a comfortable and stable stride. Its **monochromatic finish** offers a **clean** and **versatile look**, with the option to **brushed finishes** to highlight **textures** and add a **distinctive touch** to each creation.



14257

PU SOLE

PU SOLE: 14257

SIZE: 37

The **perfect balance** between **comfort** and **contemporary style**. The **comfortable yet modern heel** adapts easily to **different styles**, making it a versatile choice for any **collection**. The **wood finish** adds a **timeless touch**.





70780 TR SOLE

TR SOLE: 70780 SIZE RANGE: 35/42

PU CORK FOOTBED: 6684 SIZE: 37

This model integrates the **TR 70780 sole** with the **bio-type PU cork footbed 6684**, designed to provide a **natural footstep**. The **sole** offers **customizable** painting options, while the **upper lining** is available in a **wide variety of fabrics and colors**, adds even more **versatility**.

All of this makes this **model exceptionally adaptable** to any style.



A **true classic**, with a **timeless design** that has continued to **captivate for years**.



6691

PU CORK
FOOTBED



PU CORK FOOTBED: 6691

SIZE: 37

Our **PU cork wedge** balances **lightness** and **durability**, offering a **smooth** and **ergonomic step**. The incorporation of **high-quality EVA** visible at the edge reinforces cushioning and guarantees **exceptional comfort** in every step. Its **versatile design** allows for a **wide range of fabrics and colors** in the **upper lining**, adapting to **different styles and preferences**.

This model is a **must have** for a **chill summer**.



14241
PU SOLE





Model 14241 features a **sporty sole** with a design that combines **dynamism** and **character**. Its **strategically placed openings** in the **heel** are not just a stylish detail — they also maximize **lightness** and **flexibility**.

Available in a **wide range of colors** for **full customization**.



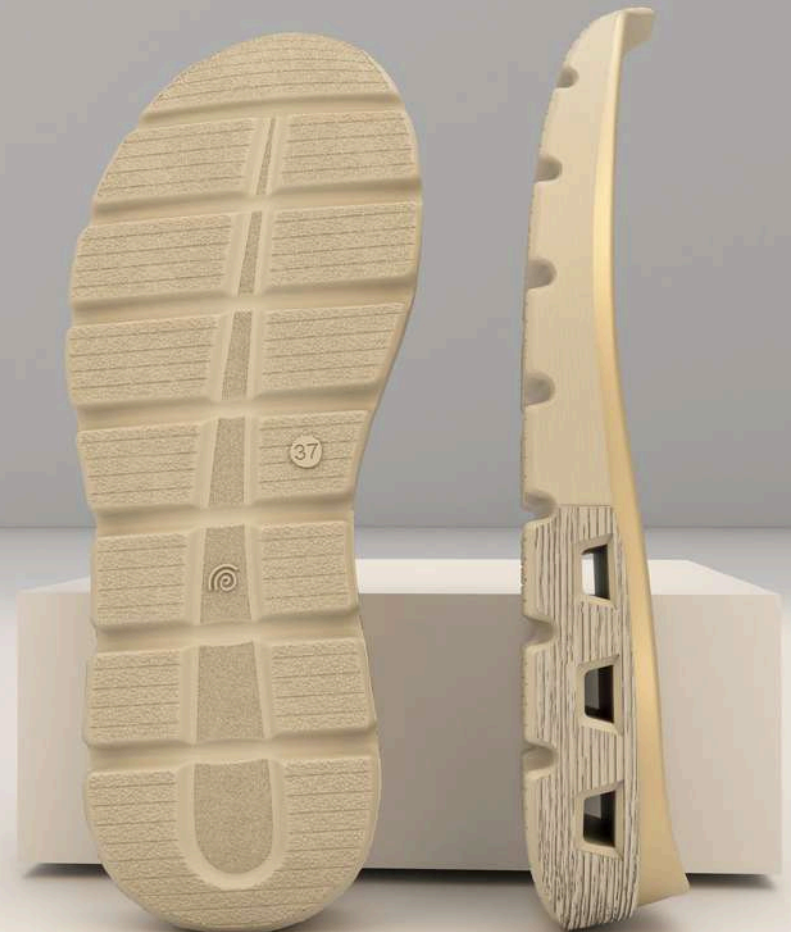
PU SOLE: 14241

SIZE RANGE: 39/46

14259

PU SOLE

Model 14259 brings the design of **model 14241** to the female audience, preserving its **sporty essence** and **innovative character**. A **perfect choice** for the **modern woman** who seeks the **ideal balance** between **style** and **functionality**.





PU SOLE: 14259 SIZE RANGE: 35/41





DESIGN HAS NO LIMITS
ONLY NEW BEGINNINGS

CONTACT US

**Phone:**

+34 966 66 12 12

**Mail:**

analco@analco.com

**Web page:**

www.analco.com

**Commercial office:**

Pol.Ind. Torrellano
c/ Germán Bernácer, 11
03203, Elche (Alicante)

**Production centers:**

Avinguda de Crevillente, km.3,
Elche

Pol. Industrial San Juan
c/Sevilla, 15 Catral
c/Barcelona, 7 Catral

Follow us
on social media



